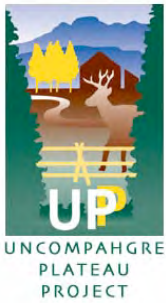


UNCOMPAGHGRE PLATEAU PROJECT



WHAT IS THE UP PROJECT?

- Consultation
–Assists in coordinating, funding and facilitating restoration activities across jurisdictional boundaries.
- Cooperation
–A landscape collaborative that pulls federal and state agencies, interest groups and private citizens together.
- Communication
–Serves as a liaison for the Partners and the public.
–Educates the public through meetings, publications and the website.
- Conservation
–Works to achieve long-term landscape restoration goals.

WHAT ARE OUR PROGRAMS?

- Landscape-Scale Project Assessment and Implementation
- Coordinated Weed Management Area Plans
- Native Plant Program
- Scientific Studies on Restoration Ecology
- Public Education and Outreach on Landscape Restoration

WHO ARE WE?

UP Partners:

- Bureau of Land Management - Uncompahgre and Grand Junction Field Offices
- US Forest Service - GMUG Forest
- Colorado Division of Wildlife
- Public Lands Partnership
- Western Area Power Administration
- Tri-State Generation
- Uncompahgre/Com Inc.



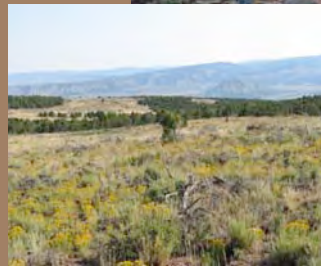
WHAT ARE OUR GOALS?

- To improve ecosystem health on the Uncompahgre Plateau through active management based on best available science and local community interests.
- To partner with others in the restoration of native plant communities on the Colorado Plateau.



OUR AWARDS

- Outstanding Achievement Award from the Colorado Chapter of the Wildlife Society - January 2005
- National Fire Plan Award for Excellence in Collaboration presented by the U.S. Departments of Agriculture and the Interior and the National Association of State Foresters - 2005
- Secretary of the Interior's Four C's Award: The Philosophy of Consultation, Cooperation, and Communication, all in the service of Conservation - October 2004



Visit us at: www.UPProject.org
or email us at:
UPProject@UPProject.org

ADVANTAGES TO LANDSCAPE - SCALE COLLABORATION

- Works across jurisdictional boundaries.
- Creates maximum mileage from limited resources.
- Provides more credibility, less controversy.
- Develops holistic projects that meet multiple needs.
- Provides a set of well-designed projects for subsequent years.
- Develops trust and a shared vision and goals.
- Provides a clear, unified message.
- Involves best available science.
- Creates healthier landscapes.
- Provides the opportunity for focused public education.

Updated: 09.16.06

UNCOMPAHGRE PLATEAU PROJECT

HOW DID WE EVOLVE?

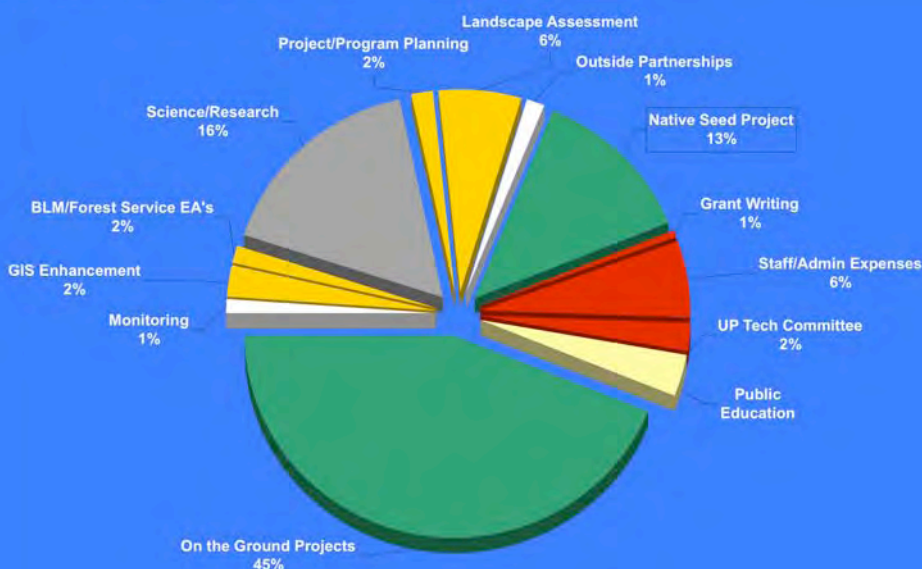
- **1998**- A study of mule deer habitat on the Uncompahgre Plateau brings multiple agencies together to discuss current conditions.
- **1999**- The Uncompahgre Ecosystem Restoration (UP) Project begins.
- **2000**- UP Team begins formally meeting.
 - Funding received from the BLM, USFS, CDOW and HPP.
 - Large roller-chop projects begin in past BLM chainings.
- **2001**- PLP receives a Ford Foundation Grant for a community-based forestry demonstration program.
 - PLP creates Unc/Com, Inc., a 501©3 non-profit to administer PLP and UP funding.
 - USFS, BLM, CDOW, and PLP sign an MOU formally recognizing the UP Partnership.
 - Public meetings, newsletter, website and field trips begin.
 - Native Plant Program initiated.
- **2002**- UP Plan drafted using collaborative input from all Partners.
 - Mosaic Driver process, Priority Watershed process, Interagency GIS compatibility and Landscape Dynamics Model developed.
- **2003**- USFS and BLM Watershed Env. Assessments completed.
 - Intensive project planning and implementation begin.
- **2004**- 30,000 total acres of projects completed.
 - WAPA and Tri-State become formal partners.
 - Native Plant Program expands into Upper Colorado Plateau Region.
- **2005**- *Ecology and Management of Pinyon-Juniper and Sagebrush Communities Conference* held in Montrose, CO.
 - Collaborative Weed Management Area (WMA) Plan initiated with the 148,000-acre Horsefly WMA.
- **2006**- Ironhorse Landscape Assessment completed.
 - Collaborative Weed Management Area Plans continue into the 250,000-acre Tabaquache and Mesa Creek WMAs.



HOW DO WE OPERATE?

- Agency Partnerships
 - Formal MOU signed between the UP Project and Agencies
- Technical Committee
 - Two representatives from each Partner
 - Meets monthly
 - Provides oversight for all UP Projects
 - Reports UP activity to their agencies/ organizations
- Non-Profit Interface: Unc/Com., Inc. 501c3
 - Allows funds to be pooled and leveraged
 - Administers contracts
 - Solicits bids and pays invoices
- UP Staff
 - 4 part-time UP Coordinators
 - 3 part-time Native Plant Program Employees
 - Seasonal employees for field work
- Public Partnerships
 - Continual input from interest groups and community members

UP Project Expenditures - '98 thru 2005 Total \$6.47M



FUNDING SOURCES

- Bureau of Land Management
- US Forest Service
- Colorado Division of Wildlife
- Public Lands Partnership
- Western Area Power Administration
- Tri-State Generation
- National Fish and Wildlife Foundation
- Western Sustainable Agriculture and Education
- Norcross Wildlife Foundation
- Western Colorado Community Foundation
- Colorado Historical Society
- National Resources Conservation Service
- National Forest Foundation
- Center for Invasive Plant Management
- Colorado Habitat Partnership Program
- Rocky Mountain Elk Foundation